

HF5/HF8



HF8 wall version



HF5 duct version

Benefits

- Measures relative humidity, temperature and dew point
- Absolute repeatability guaranteed
- Freely programmable and scalable analog outputs

Applications

- HVAC applications
- Food and pharmaceutical industries
- Printing and paper industries



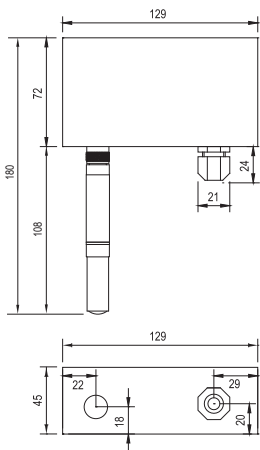
General Information

Order Code	HF5	HF8
Sensors / Calibration	<ul style="list-style-type: none"> • Temperature adjustment (one point directly with device) two point with software • Humidity adjustment (one point directly with device) two point or multi point with software 	
Display	<ul style="list-style-type: none"> • Models with display available • Display freely configurable 	
Connections	<ul style="list-style-type: none"> • Models with Ethernet (LAN), RS485, USB and analogue signals on screw terminals 	

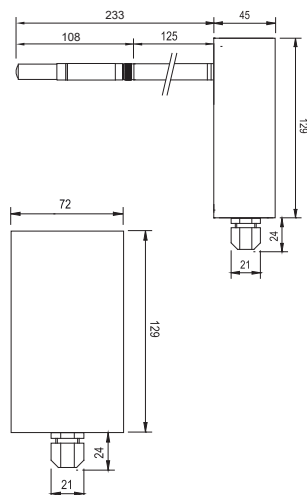
Technical Information

Dimension of HF52/53/54

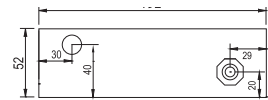
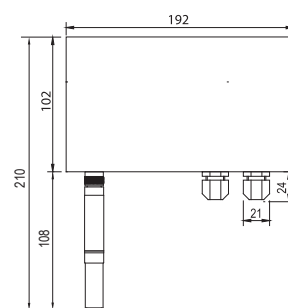
Wall version (W)



Duct version (D)

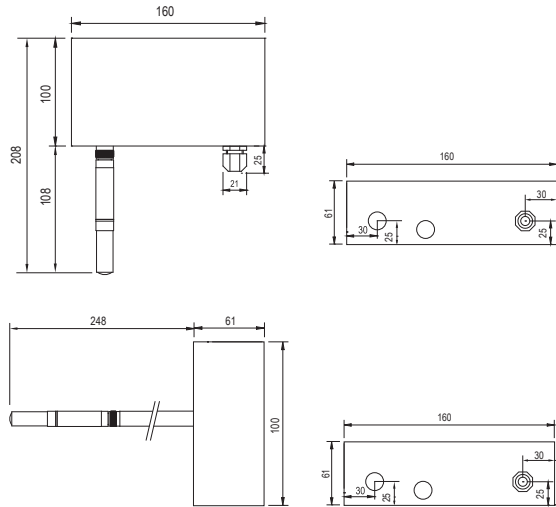


Dimension of HF56

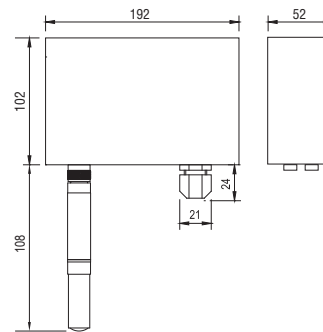




Technical Information

Dimension of HF53/54 -S



Dimension of HF8



		
	HF5 + HC2A-S	HF8 + HC2A-S
General Specifications		
Type	HF52: 2 wire HF53/54: 3/ 4 wire	HF83/84: 3/4 wire
Parameters	All psychrometric calculations	
Application range	Depends on probe model	
Alarm/Indicator	Alarm indication on display	Alarm indication on display, audible alarm and relay
Instrument-Specific Data		
Current consumption	HF52: 2 x 20 mA HF53/54: 100 mA	All models 150 mA except with Ethernet interface 300 mA
Warm-up time	HF52: < 60 sec. HF53/54: 3 sec.	1.9 sec
Memory capacity	2000 values (%rh and °C)	10000 values (%rh and °C)
Humidity Measurement		
Humidity sensor	ROTRONIC HYGROMER HT-1	
Temperature Measurement		
Sensor	PT100 1/3 class B	
Software		
HW4	Available as download at www.rotronic.com	
Conformities/Housing		
CE / EMC compatibility	EMC Directive 2014/30/EU: EN 61000-6-1, EN 61000-6-2, EN 61000-6-3, EN 61000-6-4: + A11	
Housing material	ABS (HF5-S Aluminium)	
Dimensions	See technical drawing of HF5 / HF8	
Weight	HF52: 250 g HF53/54: 540 g HF56: 750 g	540 g

Subject to technical change without notice. Printing and other errors reserved.

59104E/2021-05

Probes for HygroFlex Transmitters

Standard Climatic Probe

Range of application: -50...100 °C

Variants: Plastic and stainless steel version



Industrial Probes

Range of application: -100...200 °C

Material: Stainless steel



Standard Order Code	Type	Accuracy @ 23 °C	Application Range	Sensor Element	Long-Term Stability
HC2A-S	Standard probe black	±0.8 %rh ±0.1 K	-50...100 °C 0...100 %rh	HYGROMER HT-1	<1 %rh / year
HC2A-S-3	Meteo probe white				
HC2A-SM	Steel probe				
HC2A-S-HH	Standard probe for harsh environments	±1.2 %rh ±0.1 K			
Industrial Order Code	Type	Accuracy @ 23 °C	Application Range	Sensor Element	Long-Term Stability
HC2A-IC	Industrial PPS probe	±0.8 %rh ±0.1 K	-100...200 °C 0...100 %rh	HYGROMER HT-1	<1 %rh / year
HC2A-IM	Industrial stainless steel probe				
HC2A-IE	Industrial pressure probe				