

All Sensors  
 16035 Vineyard Blvd.  
 Morgan Hill, CA 95037  
 Phone: 408 225 4314  
 Fax: 408 225 2079  
 Email: info@allsensors.com

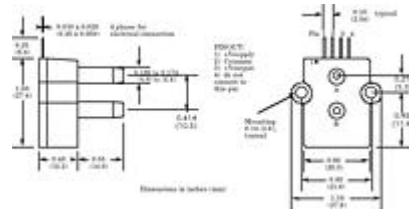
**Part Number: BARO-A-4V-MIL**

**Barometric Pressure Applications**

These Barometric pressure sensors are based upon a proprietary package technology to reduce errors. This model provides a fixed 4-volt output with superior output characteristics. The sensor housing has been designed specifically to reduce package induced parasitic stress and strain. In addition the sensor utilizes a silicon, micro machined (MEMS) structure to provide a very linear output to measured pressure. The sensor embodies a vacuum reference.

These calibrated and temperature compensated sensors give an accurate and stable output over a wide temperature range. Each sensor is internally compensated using an ASIC compensation technique. This series is intended for use with non-corrosive, non-ionic working fluids such as air, dry gases and the like.

All parameters are measured at 5.0 volt excitation for ratiometric parts and 12.0 for parts with internal reference, for the nominal full scale pressure and room temperature unless otherwise specified.



**SPECIFICATIONS**

Pressure Sensor Line	Barometric
Maximum Lead Temperature	250 °C
Burst Pressure	60 psi
Compensated Temperature Range	-40 to 125 °C
Operating Temperature Range	-40 to 125 °C
Storage Temperature Range	-40 to 125 °C
Humidity Limits	0 to 95 %RH
Supply Voltage	4.5 to 5.5 V
Minimum Operating Absolute Pressure	600 mbar
Maximum Operating Absolute Pressure	1100 mbar
Operating Absolute Pressure Range	600 to 1100 mbar
Minimum Output Voltage at 1100 mbar	4.20 V

Nominal Output Voltage at 1100 mbar	4.25 V
Maximum Output Voltage at 1100 mbar	4.30 V
Output Voltage Range at 1100 mbar	4.20 to 4.30 V
Minimum Output Voltage at 600 mbar	0.20 V
Nominal Output Voltage at 600 mbar	0.25 V
Maximum Output Voltage at 600 mbar	0.30 V
Output Voltage Range at 600 mbar	0.20 to 0.30 V
Maximum Offset Voltage (Temperature Shift -40°C to 125°C)	±20 mV
Nominal Linearity (Hysteresis Error)	0.05 %fs
Maximum Linearity (Hysteresis Error)	0.25 %fs
Linearity Range (Hysteresis Error)	0.05 to 0.25 %fs
Maximum Span Shift (-40°C to 125°C)	±1 %span
Package Series Description	A-Series
Operating Mode (Differential, Gauge, Absolute)	Absolute